

Highway 92 and Lee Road

Douglasville, GA 30135 | Douglas County



COMMERCIAL SITES FOR SALE

HIGHLIGHTS

- Traffic signal at Lee Road and Highway 92
- Daily traffic count is 30,000 ±
- Graded sites with utilities
- Interchange improvements at Lee Road and I-20
- Lee Road widening project started
- Zoned C-G-C, Douglas County
- Property is located in Highway 92 Village Overlay District
- Adjacent to Tractor Supply, Walgreens and RaceTrac.



Ackerman & Co.

LARRY WOOD
770.913.3902
lwood@ackermanco.net



KYLE GABLE
404.867.3332
kgable@pioneerlandga.com

Highway 92 and Lee Road

Douglasville, Georgia 30135
Douglas County

AERIAL



Ackerman & Co.

LARRY WOOD
770.913.3902
lwood@ackermanco.net

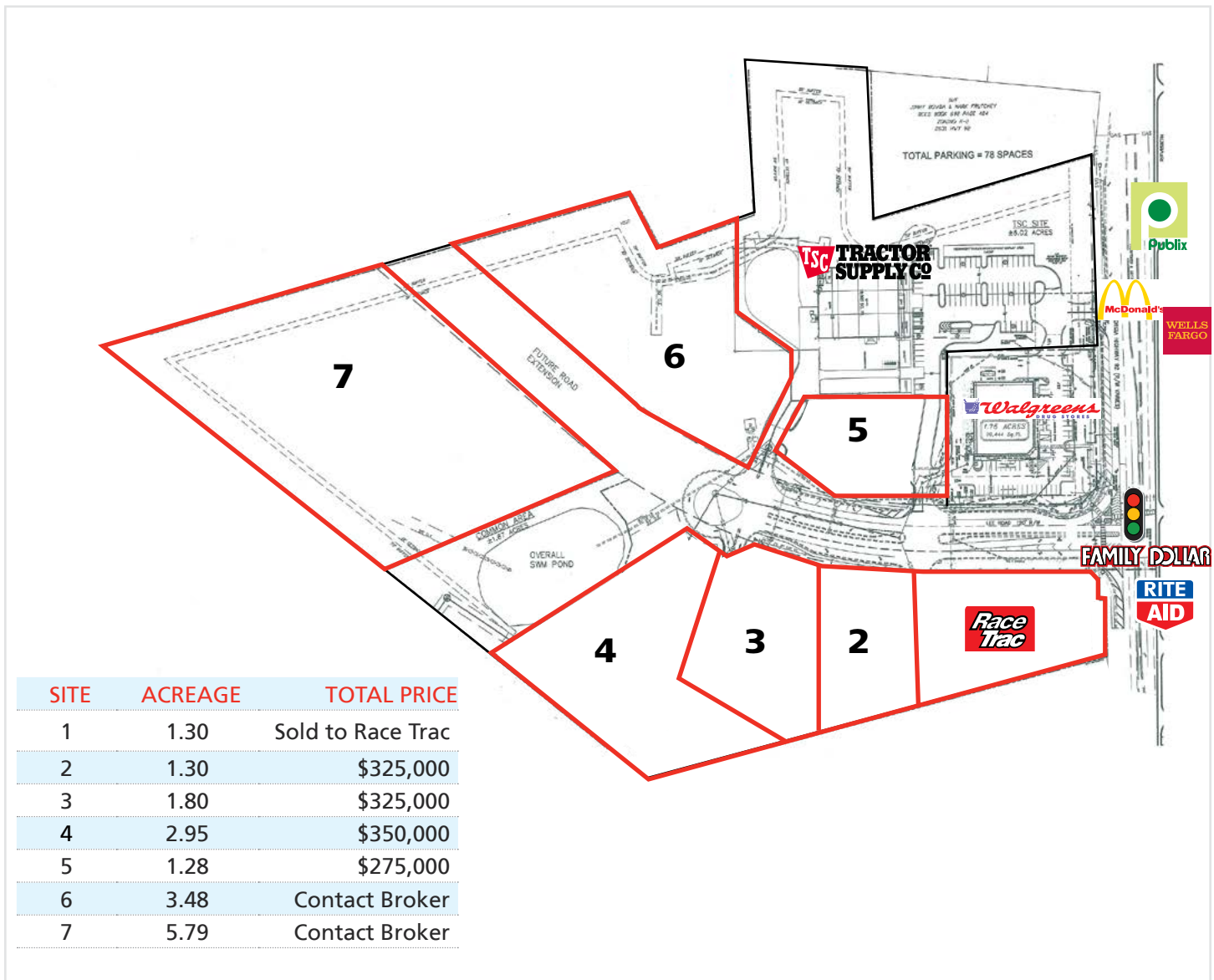


KYLE GABLE
404.867.3332
kgable@pioneerlandga.com

Highway 92 and Lee Road

Douglasville, Georgia 30135
Douglas County

DEVELOPED OUT-PARCEL SITES



DEMOGRAPHICS	1-MILE	3-MILE	5-MILE
Population	5,104	28,948	84,702
Average Household Income	\$58,059	\$68,805	\$67,535
Number of Households	1,713	10,018	29,747

Ackerman & Co.

LARRY WOOD
770.913.3902
lwood@ackermanco.net



KYLE GABLE
404.867.3332
kgable@pioneerlandga.com